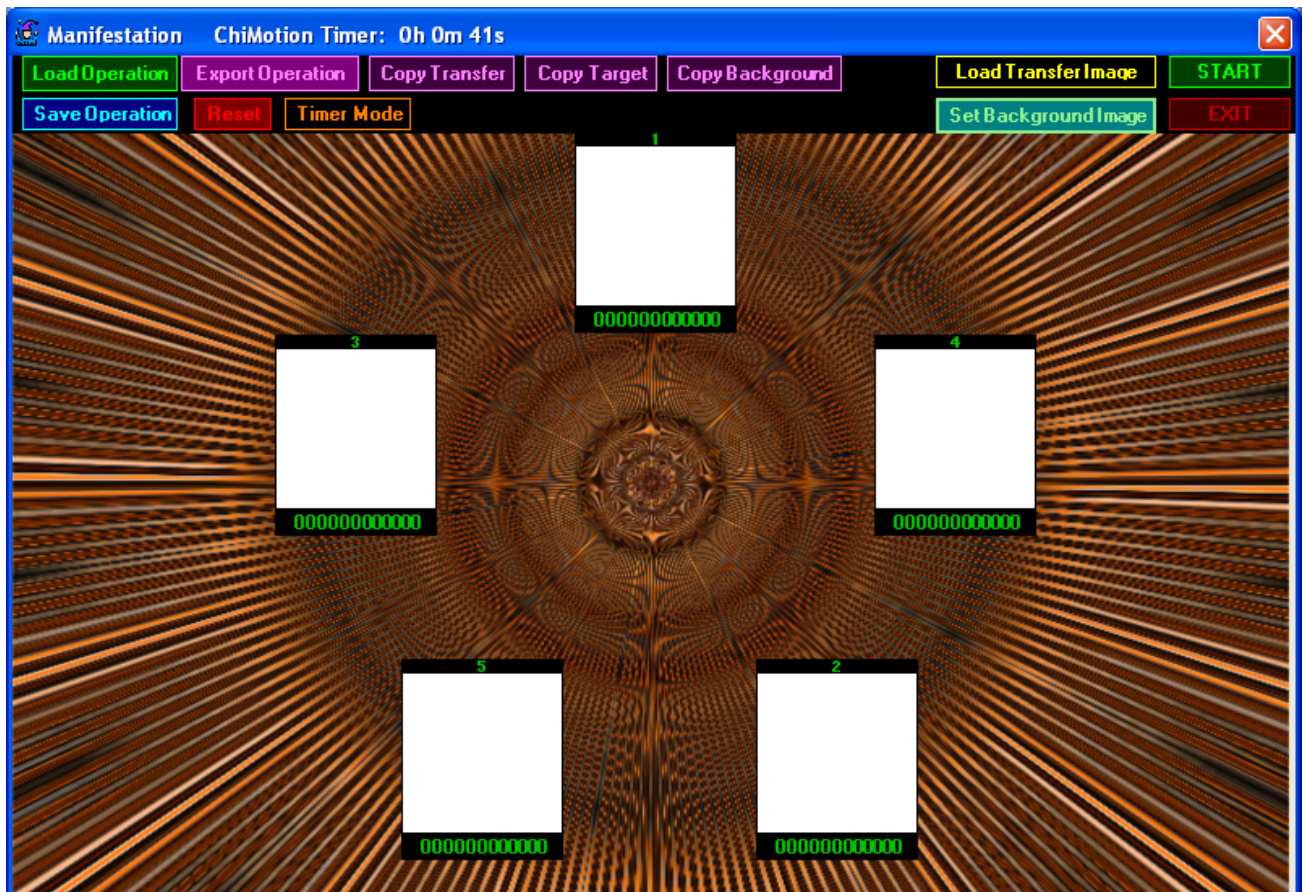


HSCTI - BEC

***HYPER SPACE COMMUNICATIONS
AND TECHNOLOGIES INTERNATIONAL
Atlanta, Georgia, USA
BIO ENERGY CORPORATION
Budapest, Hungary***



Manual

for the

Manifestation Program

HSCTI, P.O. Box 1298, Woodstock, GA 30188, USA

Phone: (770) 783 0563

BEC - Bio Energy Corporation - Budapest, Hungary

Phone: +36 20 468 8180

Copyright© 2008 by Karl Hans Welz

All Rights Reserved. No portion of this manual may be used without expressed written consent of the author.

Orgone Generator®, Chi Generator®, Orgonite®, Orgonit™, Orgonita™, Power Radionics™, Super Radionics™, Super Psionics™, etc., are trademarks owned by Karl Hans Welz. Equally copyrighted (and protected with internal radionics settings) are the ideas and procedures used in the Radionics Programs.

The Manifestation Program

You received this program with a transfer diagram. Put the hard copy on your Chi Generator® or next to it, while the .jpg image of the transfer diagram is running in your program. This transfer diagram operates as a structural link between program and Chi Generator®. You can establish a structural link from the program to yourself by connecting to the Chi Generator® with one of the the Transfer Couples, such as the TC 99, the PBT 69, the RAOPTC or the Chi-Card.

What follows, is a step-by-step introduction to this program.

At first, install the program itself, following the instructions after you insert the Manifestation CD.

The next steps are installations of the Chi Transfer, target photos (if desired) and additional background images.

First start the program by clicking on the ikon on your desktop.



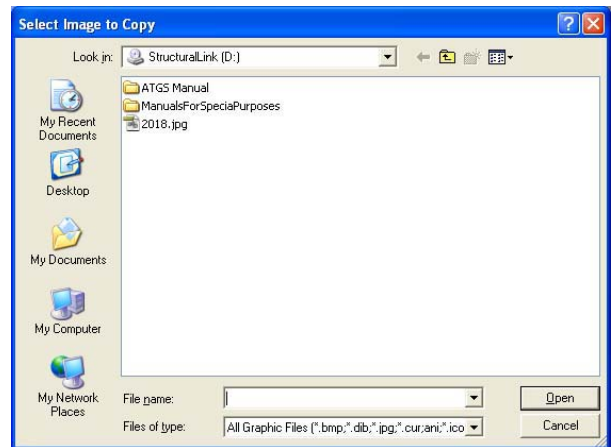
Copy Protection Notice in the program



Click the “Start” button and the startup screen will appear. This screen has two positions showing. This program had 5 fixed positions in pentagram-arrangement, for each of which you can indicate the function in general and add a description of the desired effect or target of the operation in particular.



Before you begin to set up the program for specific operations, it is necessary that you install the transfer diagram. The transfer diagram is unique for every program. It either comes on a separate disk, which also contains the manual and additional information. Click on the “copy transfer” button, and the following window will pop up.



Next, you insert the “Structural Link” CD and after the popup window appears, click on the number, which represents the transfer diagram (example next page).

Similarly you can install new backgrounds and photos of persons by clicking on “copy background” and “copy target.”

You can either copy images from your computer or from CD's.

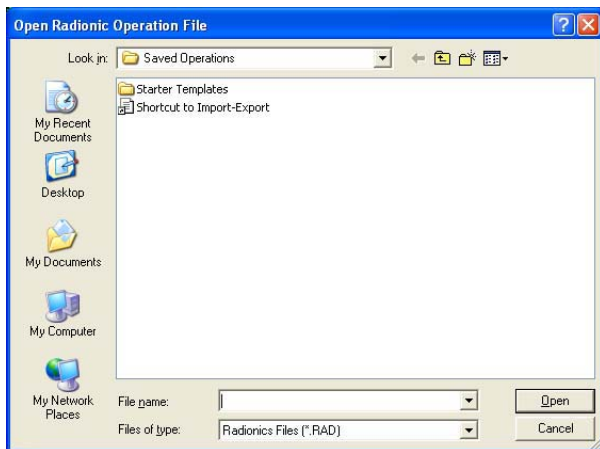
The program is ready to run.

The program comes with Starter Templates as examples. It also features an export-import function, which allows to share programs with others who may have sets of images that differ from yours.

At first we open a Starter Template, then we will continue with an imported file and finally You will set up your own operation.

First, load an operation the following way:

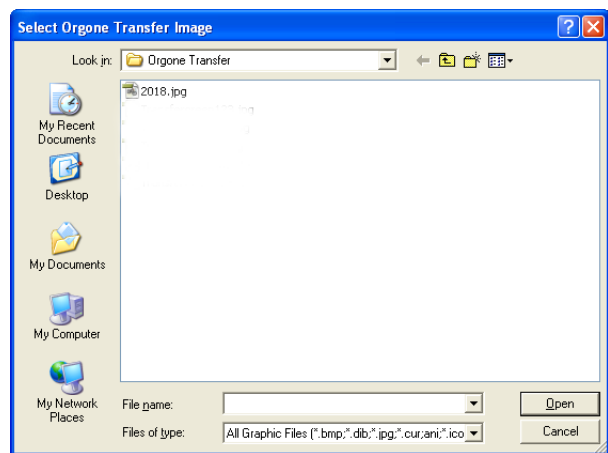
- (1) click on the button "Load Operation"
 - (2) click the folder "starter templates"
 - (3) Select the area by clicking at the folder.
- In our example, we click "Productivity" and select the file "Get Things Done."



The following image appears.



Now load the transfer diagram by clicking on the "load transfer image" button - the popup window shows the installed transfer diagram. Of course you can also design your own transfers.



With the transfer image loaded, you can start running the program as is. When working on yourself and you carry a transfer, you need not put your picture into the "target" position. If you identify yourself or any other person in the target position, a personal transfer is not needed. Of course you need to put on your Chi generator® the laminated transfer card that you received with this program. Click the "Start" button and the transfer image starts moving from position to position, merging with each of the images in the positions - see below.

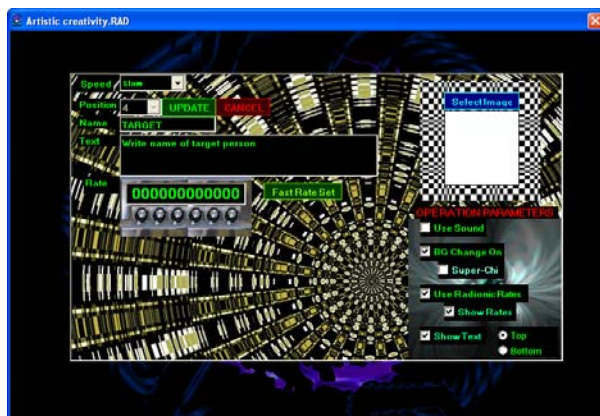


To edit the images or to set a target image with name, double click the image.

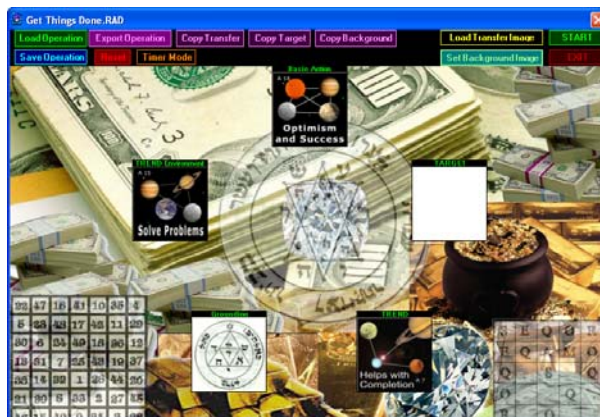


The popup gives you a series of options:

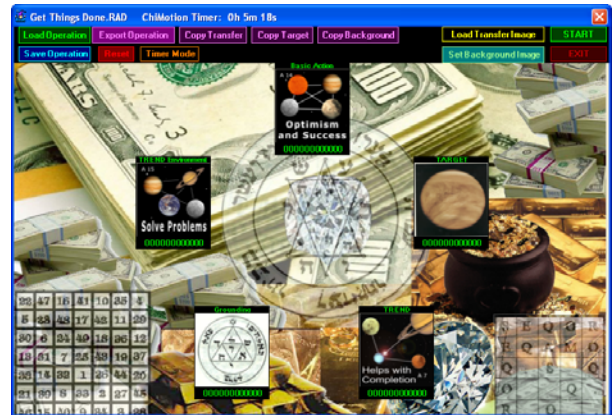
- (1) You can determine the speed of the movement of the structural link to your generator (the transfer image)
 - (2) you can edit the position
 - (a) by renaming it, and
 - (b) by describing it more accurately.
 - (3) you can select an image
 - (4) you can use sound for each position
 - (5) you can set up the background to change from position image to position image
 - (6) you can show the text
 - (7) you can decide to set radionics rates. You can use the "fast rate set" option or you can work them by holding the mouse button down at each one of the knobs and decide with a stick pad or pendulum when to release the mouse button. Personally I prefer the fast rate setting.
 - (8) you can show the radionic rates
- Once you have it all set up, you update the positions, which will lead back to the main screen.



In the image below, a new background image is installed - click the "set background image" button and make a selection from the popup window - here "Big Money" was chosen.

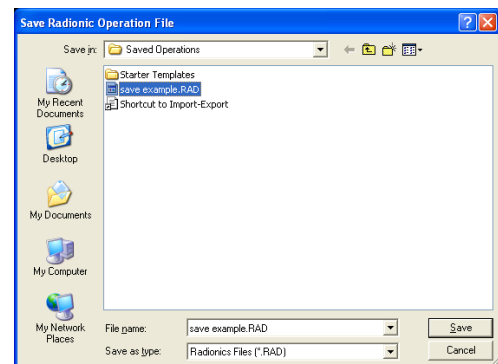


You can edit the positions as you wish with image, text, sound, etc. - your choice - and start the operation. You can copy any target of your choice into the program any time or you can take the image from your image files. I decided to use an image of the planet Venus, and I am writing "Venus" into the text box.

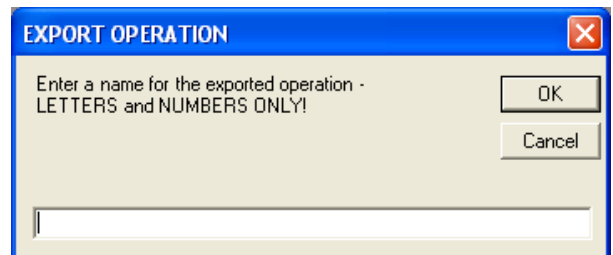


Of course you can edit any one of the images.

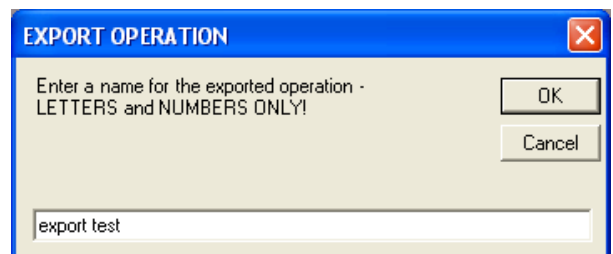
To save, click the "save operation" button and install where you prefer (next column on top).



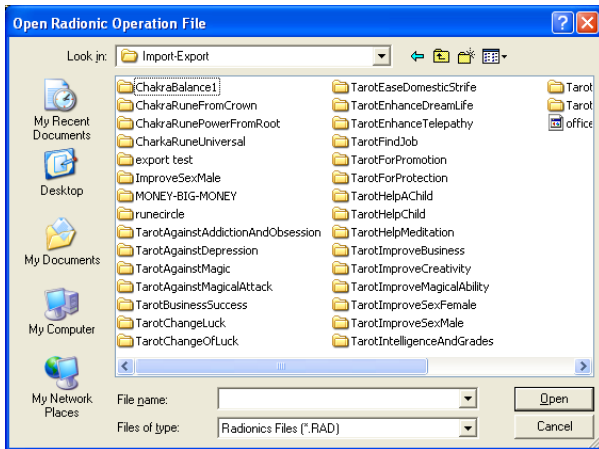
Now, for practice, export the operation.



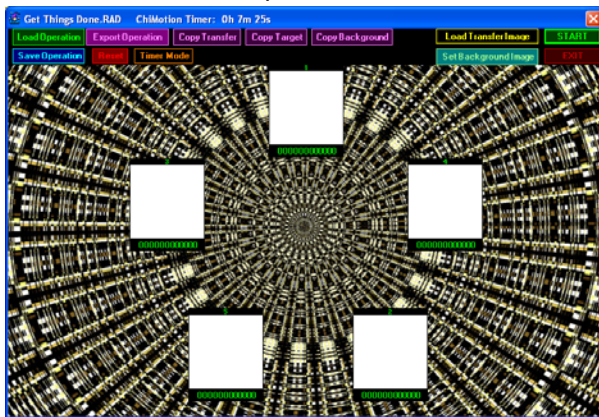
enter the name



and go to the import-export folder from “load” to see how it installed. Again, feel free to make folders and subfolders to match best your needs.



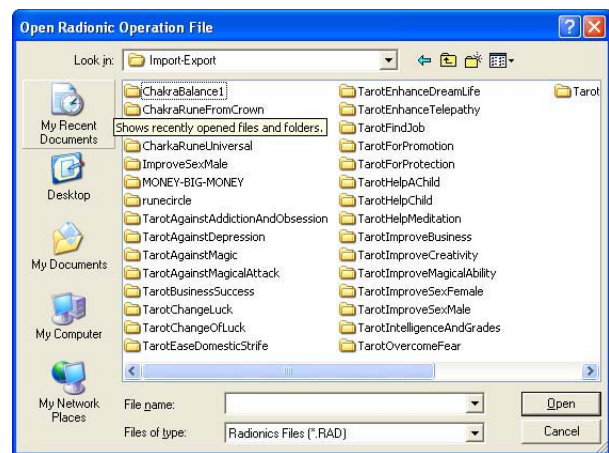
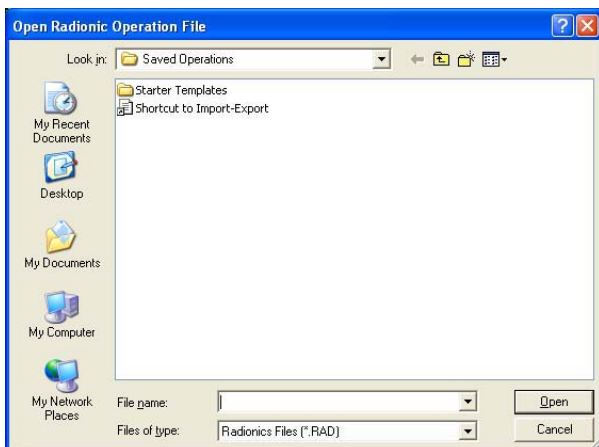
Reset - for a new operation.



... and you are ready for a new operation.

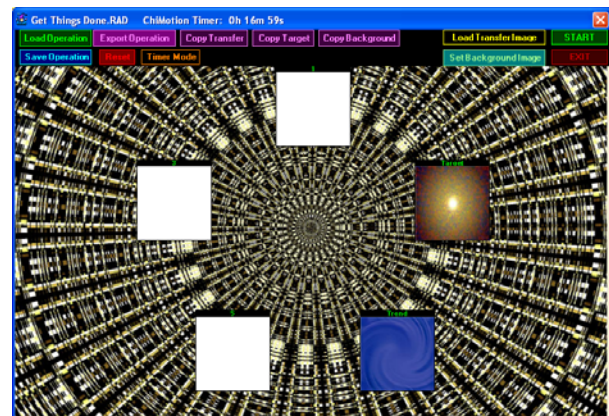
Click the “load operation” button, then click the “Shortcut to Import-Export” button. There you see a folder with the name of your exported operation.

The import function allows programs to be transferred with all images to persons who do not have the same image files on their computer.



Additional Suggestions

- (1) Start with templates and modify them for your purposes as needed.
- (2) When setting up your own operations, start with a relatively small number of parameters and increase as you gain more experience.
- (3) You can open more than one program. In fact, you can open as many as the computer allows. Important is an additional setup for equal distribution of energy: You need to use 2 positions only: Target = all operations running
Trend = equal distribution of energy
Naturally, you need a powerful device to run several operations simultaneously.



Typically, when setting up an operation you generate a “thought form” with its structural links to targets and trends. Run the program for 2 - 3 hours approximately, then wait. You should have success or at least inroads within 2 - 3 days, unless the situation is extremely complex. Whenever there is no success, it is important that you change the success strategies! When inroads are achieved, continue with the operation by repeating every 1 - 2 days.